

# **Bharat Systems Helped Tata Elxsi Set-Up High End CCTV Cameras**



# Requirement

The client had a set of high end, high-resolution CCTV cameras, but the installation was poor.

To rectify this, we were required to straighten out the installation process and install a new set of CCTV cameras for the extended buildings.

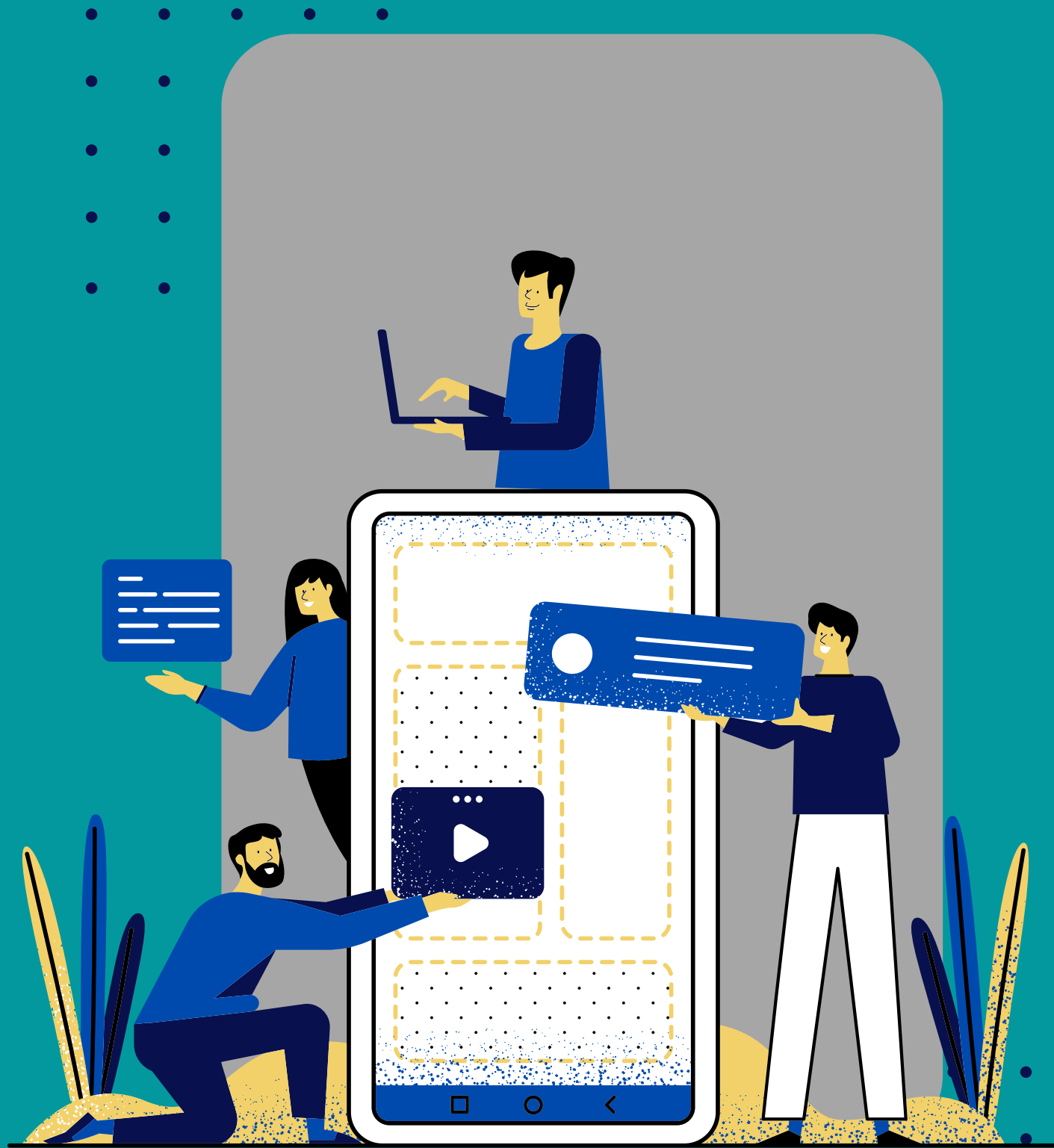


# CLIENT CHALLENGE

**Cables of the CCTV cameras were spread across 4 acres of land, making it difficult to reach a Digital Video Recorder. This was a long distance to be cabled over, for CCTV connections.**

**While testing telecom connections, we figured that its signals were interfering with the CCTV camera signals.**

**Due to which, the clarity and the signal of CCTV cameras was poor. Hence, the clients needed to have the problem fixed.**

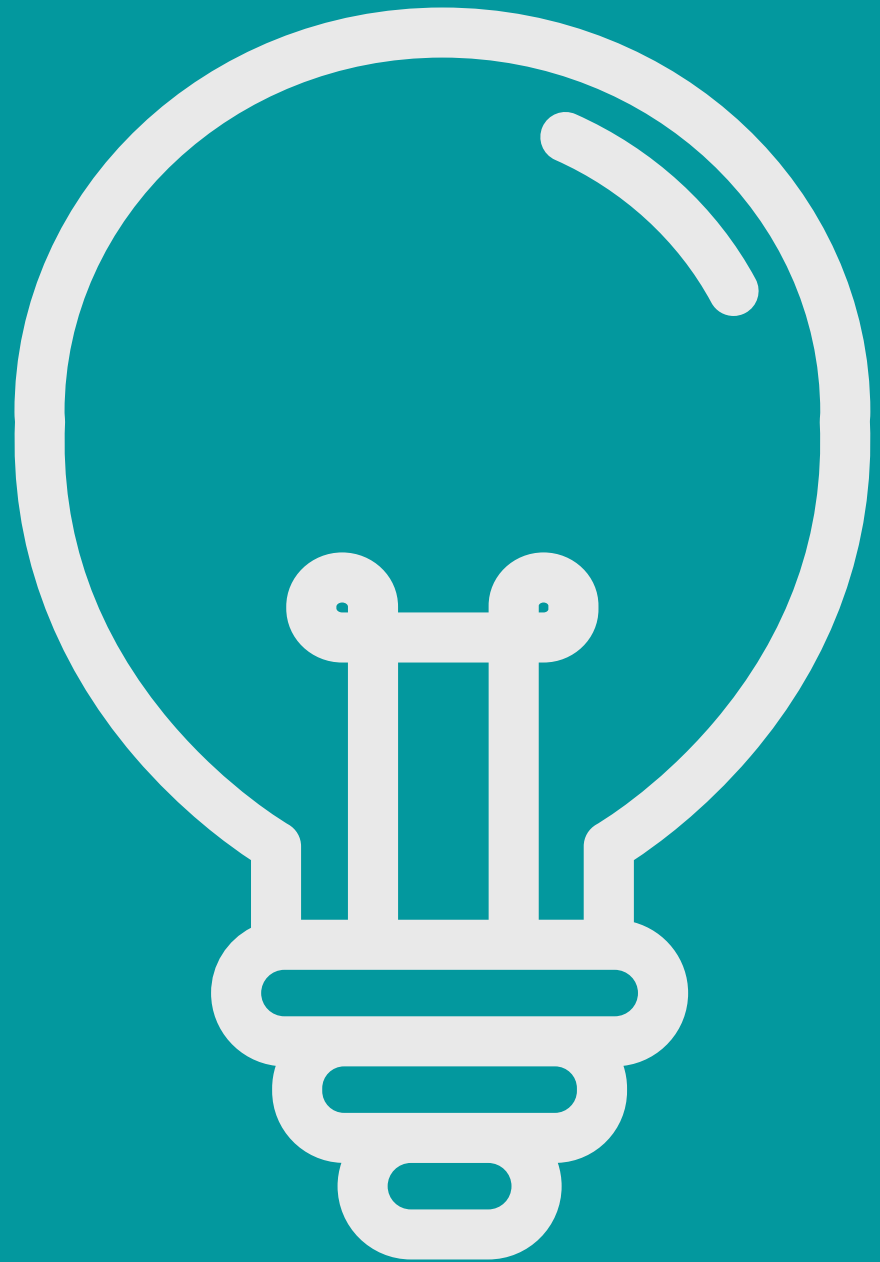


# APPROACH

We identified that a low loss tri-shield, low interference RG11 coaxial cable would suit the requirement of carrying CCTV video signal to a distance of 200 meters.

To prevent any kind of electromagnetic interference (EMI), we chose a cable with a protective shield.





**We selected connectors with waterproof compression to prevent water entering from outside due to rain or places of joints.**

**We ensured professional quality installation of cables with proper support wires to protect cables from miscellaneous damages and overpulling.**

# RESULTS

Once the installation was done, customer was happy to see clear signal and pictures.

We were able to deliver uninterrupted, low interference signal with its sufficient strength on monitor.

